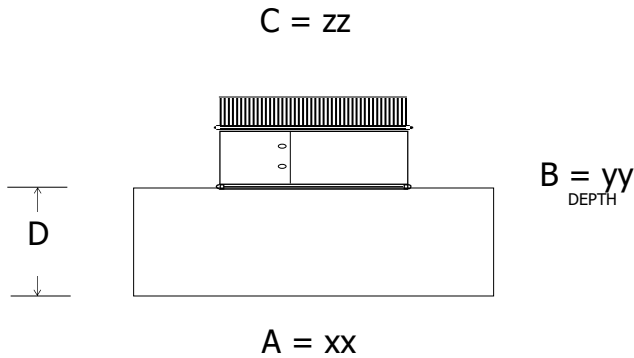


RETURN AIR BOX W/COLLAR

CA60



A (Width)	B (Depth)	C (Collar)	D (Height)	GA
6-36	6-36	4-24	4" Standard	28, 26, 24

Galvanized Steel, G30/40 coating standard.
 Round opening crimped, RAW edge standard.
 Riveted construction.
 Options: 1" Flange all around rectangular opening.
 Other heights available
 Insulated R4, R6, R8

PART NUMBER DESIGNATIONS

CA60xxyyzzIF

xx = Rectangular opening (Larger)
 yy = Rectangular opening (Smaller)
 zz = Round diameter opening
 F = Flange, I= R4, R6, R8 for insulated

PROJECT: _____	COMPANY: _____	DATE : _____
LOCATION: _____	SUBMITTED BY: _____	